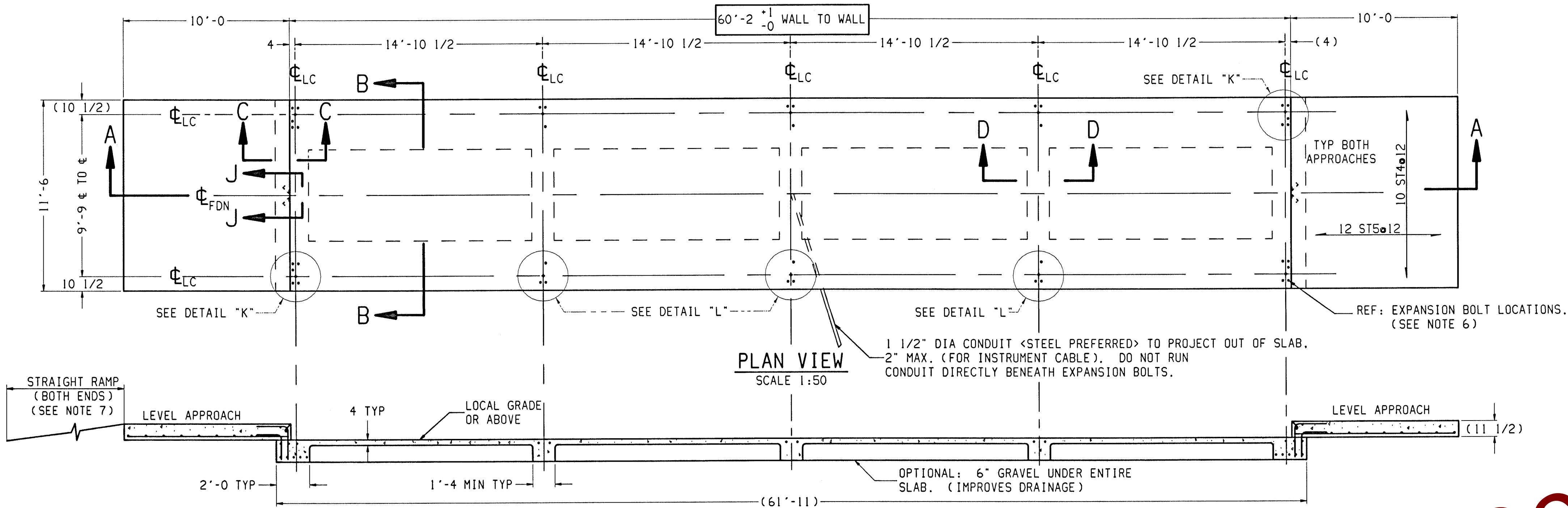
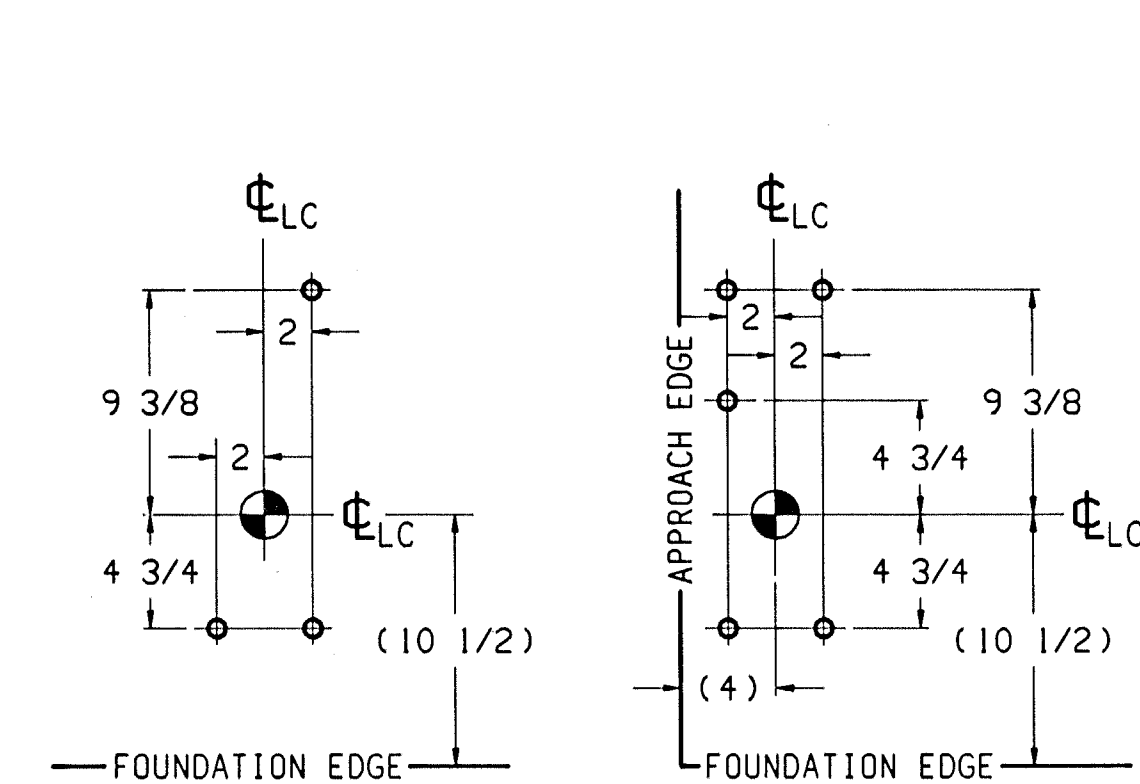


REINFORCING STEEL SCHEDULE (A.S.T.M. A-615 GRADE 60)						
COLD FORM BARS TO INSIDE DIMENSIONS			A			
SYM	QTY	SIZE	LOCATION, DIRECTION	B		WGT
				A	B	
ST1	24	#6	FLOOR BEAMS, LONG.	34'-0"		1227
ST2	24	#6	FLOOR BEAMS, LONG.	30'-0"		1081
ST3	10	#6	END FOOTERS, LATERAL	11'-0"		165
ST4	10		ENDS, LATERAL			115
	20	#5	APPROACHES, LATERAL	11'-0"		230
	6		FOOTERS, LATERAL			92
ST5	24	#5	APPROACHES, LONG.	9'-6"		238
L1	24	#5	APPROACH TO END TIES	2'-0"	2'-0"	101
L2	24	#5	APPROACH TO END TIES	1'-6"	1'-6"	76

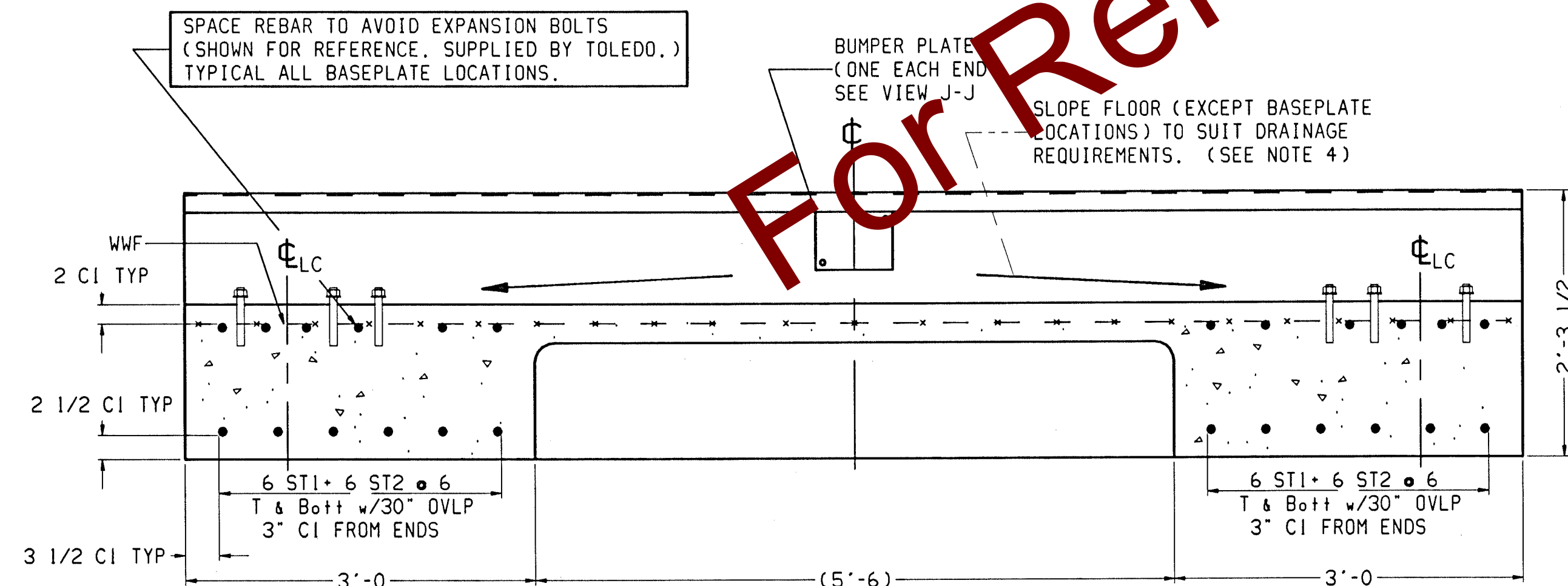
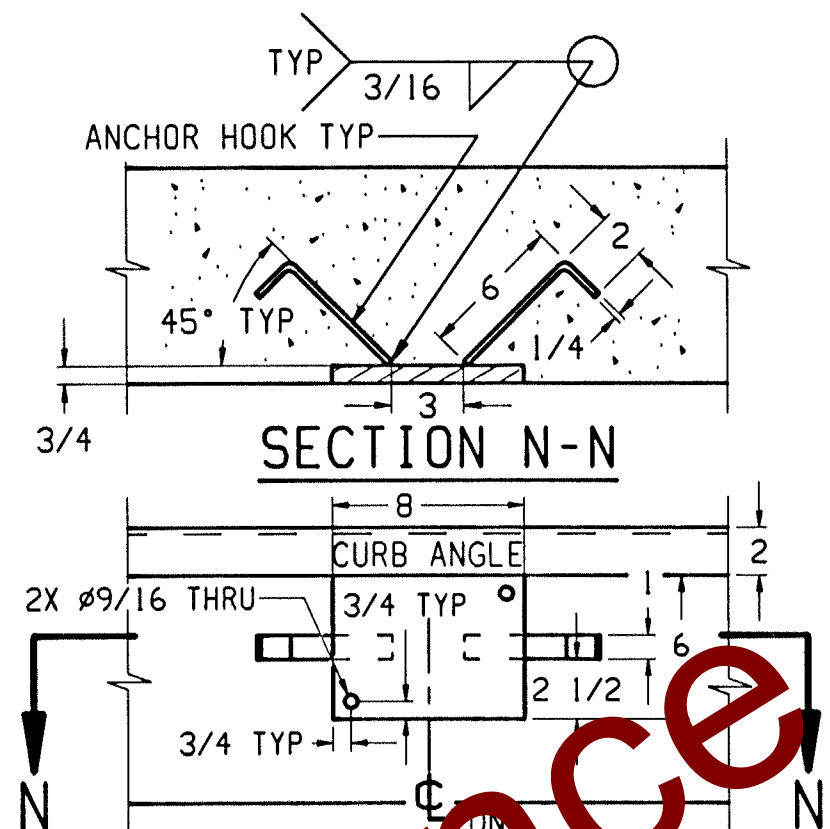


ELEVATION A-A
SCALE 1:50

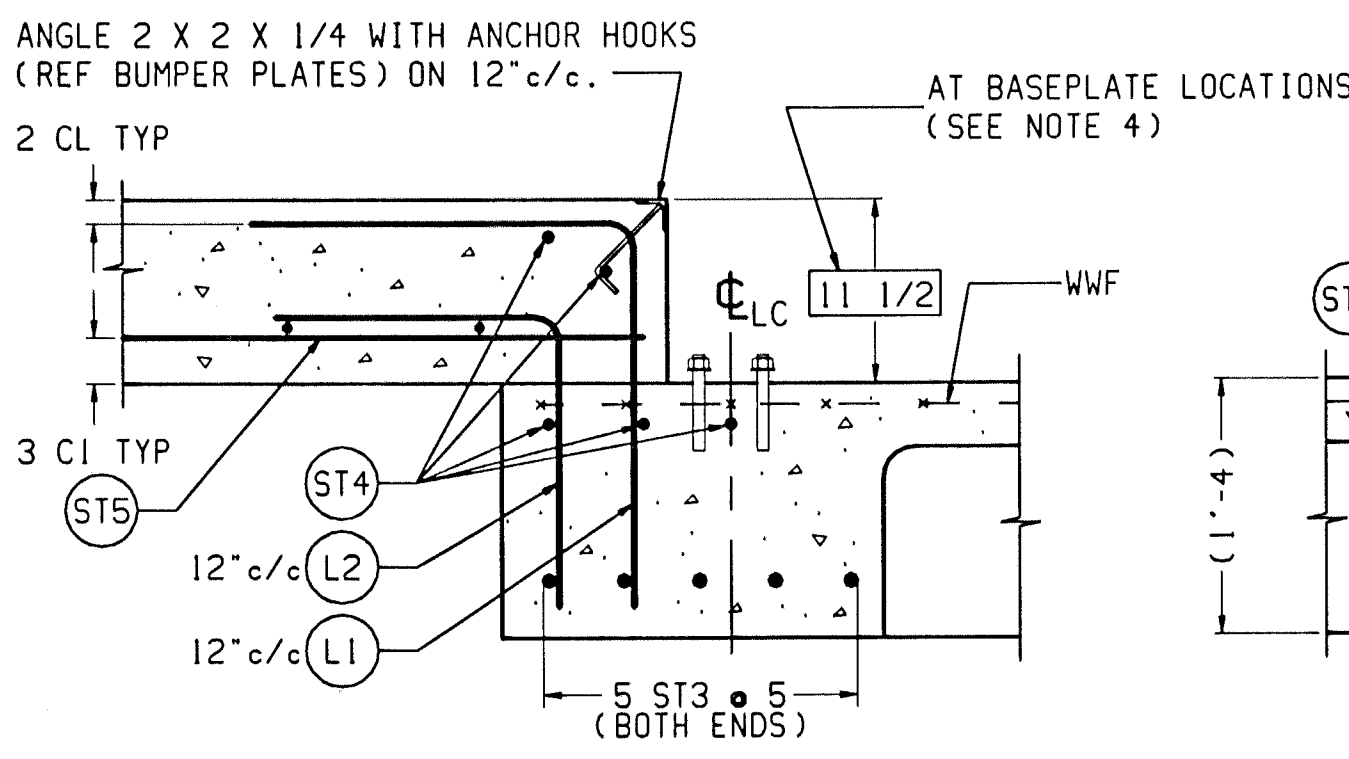


DETAIL "L"
SCALE: 1:8
EXPANSION BOLT LOCATIONS
(OTHER SIDE IS OPPOSITE)

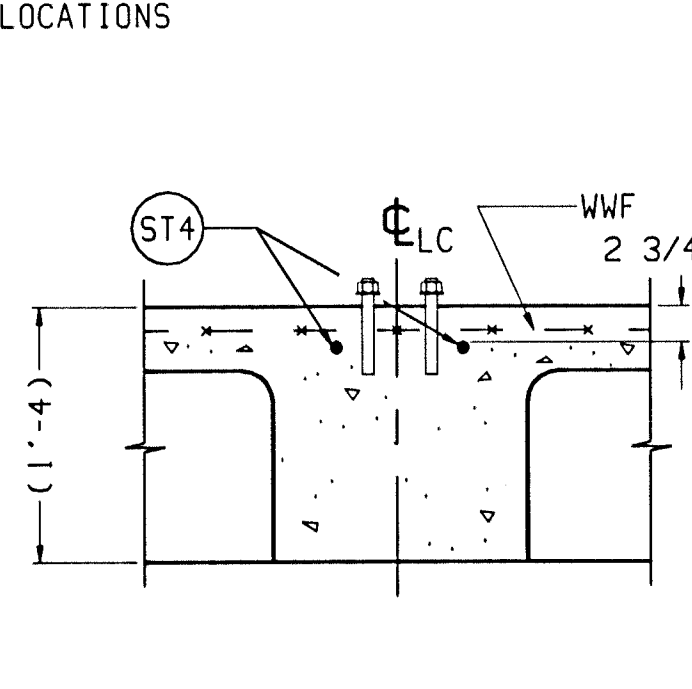
DETAIL "K"
SCALE: 1:8
EXPANSION BOLT LOCATIONS
(OTHER SIDE IS OPPOSITE)



SECTION B-B
SCALE 1:12



SECTION C-C
SCALE 1:12
(TYPICAL END WALL)




SECTION D-D
SCALE 1:12
(TYPICAL FOOTER)
SINGLE BASEPLATE

MATERIAL SUMMARY *	
CONCRETE (CU. YDS.)	33
REINFORCING STEEL (LBS)	3325
WWF: 6x6-W1.4xW1.4 (SQ. FT.)	690

* QUANTITIES GIVEN ARE FOR FOUNDATION ONLY. IF CONCRETE PLATFORMS ARE USED, REFER TO GENERAL LAYOUT DRAWING FOR DECK CONCRETE AND REINFORCING STEEL QUANTITIES & SPECS.

- NOTES:
- 1) USE MINIMUM 3000 PSI STRENGTH CONCRETE AT 28 DAYS WITH 5-7% AIR ENTRAINMENT.
 - 2) USE MINIMUM 60KSI YIELD DEFORMED REINFORCING STEEL.
 - 3) FOUNDATION REQUIRES 1500 PSF RATED SOIL.
 - 4) TOP OF CONCRETE AT BASEPLATE LOCATIONS TO BE LEVEL AND IN ONE PLANE $\pm 1/8"$.
 - 5) DIAGONAL MEASUREMENTS ENDWALL TO ENDWALL MUST BE EQUAL WITHIN $1/2"$.
 - 6) BASEPLATE ANCHORS TO BE $3/4"$ DIA. EXPANSION BOLTS X 6" LG. SUPPLIED BY TOLEDO. USE BASEPLATES AS TEMPLATES TO LOCATE EXPANSION BOLTS DURING SCALE INSTALLATION.
 - 7) RAMP LENGTH: -PER LOCAL REGULATIONS
- $1/2"$ SLOPE PER FOOT TYPICAL
 - 8) CONTRACTOR SUPPLIES:
 - EXCAVATION
 - REINFORCING STEEL
 - CURB ANGLE ASSEMBLIES (SECT C-C)
 - CONCRETE AND FORMS
 - $1 1/2"$ ϕ STEEL CONDUIT
 - BUMPER PLATE ASSEMBLIES (VIEWS J-J & N-N)

MARK	REVISION	BY	DATE	 TOLEDO METTLER - TOLEDO, INC. HEAVY CAPACITY PRODUCTS			
A	SHORTENED APPROACHES. REVISED REBAR SCHEDULE	ALS	7-15-91	SCALE: NOTED DATE: 3/11/91	TOLERANCE UNLESS OTHERWISE NOTED FRACT $\pm 1/32$ DECIMAL $\pm .020$ XXX $\pm .005$	DRAWN BY: TDA APPROVED BY:	
B	CORRECTED SECT B-B; ADDED CL NOTES SECT C-C	TDA	2-19-92				
				TITLE: 7560A/B FOUNDATION: BEAM SLAB 60'x11'			
				DRAWING NUMBER: TC201563 B			